

Edibles, Herbs & Medicinal

Purple Passion Asparagus is a unique asparagus variety especially suited to the asparagus enthusiast, whether home gardener or commercial grower. Its special, attractive purple color, flavor and tenderness distinguish this variety from others. Our field trial confirms all of these attributes with taste tests conducted here. In addition, our trials indicate Purple Passion has productive yields. For best performance, plant spacing for Purple Passion is 6-8 inches apart in the row instead of the usual 12-inch spacing. When cooked, the bright purple color is reduced, but when served fresh in salads it provides a colorful and flavorful accent. Purple Passion is an excellent addition to any asparagus planting. Excellent flavor and freezing quality.

Zone 3-8. Suggested # plants for family of four: 25-50



Asparagus - Comparison Chart				
Asparagus plants are highly productive, one-year-old, large-graded crowns grown in managed nursery conditions to control insects and disease pests				
Male Asparagus	Best in Zones	Flavor	Freezing Quality	Suited For
Jersey Knight	3-8	Good	Excellent	Any Grower
Purple Asparagus: The new all-male hybrids have resistance to fusarium crown rot, asparagus rust and other diseases that reduce yields and shorten the life of plantings..				
Purple Passion	3-8	Excellent	Excellent	Any Grower



Comfrey *Symphytum officinale*

Well-known for its soothing properties, it contains allantoin, promotes healing of skin and bone; also demulcent for lung and throat. Hanging bell-like pink flowers much loved by bumblebees open in early summer. Stem and leaves covered with bristly hairs. Vigorous spreading plant that demands space; control with regular harvest. 3'-5' tall. [3]

Chives *Allium schoenoprasum*

Chives are an important culinary belonging to the esteemed Alliaceae family. They have delicate cylindrical, deep green leaves that have a passing resemblance to long grass. [2]



Munstead English Lavender

Lavandula angustifolia

12-16"h x 12-24"w The most compact form of lavender with a very aromatic, small bright lavender-blue flower spikes. Semi-evergreen, aromatic gray foliage retains its sweet fragrance for years when cut. Can be used as a low hedge. Attracts butterflies. [4]



Catnip *Nepeta cataria*



Plants have fuzzy, grayish-green leaves and small, white flowers that bloom in the summer. The flowers, leaves and stem are cut while the plants are in full flower and then dried for use in herbal preparations. Taken as a hot infusion, Catnip promotes sweating and is

beneficial for colds, flus, and fevers. It is soothing to the nervous system and calming to the stomach. It aids with flatulence, diarrhea, and colic. Commonly used in connection with anxiety, insomnia, and nervousness. Contains a substance (nepetalactone) which has a sedative effect in humans. [2]

Bee Balm 'Raspberry Wine'

30-42". Wine red flowers appear atop the stocky, square stems from midsummer to fall. Monarda can be found naturally along riverbanks and enjoys rich, organic, moist soil. However, it will grow in average soil. Full sun is best, but light shade is tolerated. Plants tend to spread more quickly in the shade, however. In order to keep plants healthy and vigorous, they should be divided at least every three years in the spring. Deadheading spent blooms will prolong the bloom time. Powdery mildew is a common fungal problem with monarda. To prevent this fungus from appearing, large clumps should be thinned out so that the air circulates freely around them. Dry soil promotes powdery mildew. The flowers' sweet nectar attracts scores of hummingbirds, bees and butterflies to the garden. The aromatic foliage smells like mint when. [4]



Leather Leaf *Chamaedaphne calyculata*

This rare shrub is one of the earliest 24-inch shrubs to produce flowers in the spring. The small white bell shaped flowers cover every branch, feeding hungry insects. The light green leathery leaves are one inch long and slender and are evergreen. The leaves are deep green throughout the summer and then brownish tan in the winter months. Plants thrive in wet conditions and will grow successfully in dryer soil types. Plants are cold hardy and can survive the cold temperatures. Zones 3-7

Tansy

Tanacetum vulgare

Grows 3-5' Produces button-shaped yellow flowers in cluster in later summer. Best as a decorative hardy border for gardens and is known to repel flying insects and ants. Zone 2





Lemon Grass

Lemon grass is one of the most widely used plants today. 90% of all natural vitamin D is extracted from Lemon Grass. Citronella, which is a mosquito repellent, is extracted from Lemon Grass. Cooking with it gives foods flavor, making them rich in vitamins. Lemon Grass tea is refreshing and healthy. The wispy foliage of the plant makes it attractive for pot growing or as an annual ornamental in cold areas. When the smell of lemon is wanted, simply break off a leaf or stem and the scent will freshen the area where the plant is located. Protect the plant from temperatures below 32°F

Wild Ginger

Asarum canadense

This beautiful and robust ground cover grows only 4" tall. The large kidney shaped hairy leaves of the plant have the aroma of spices. The flowers are 3 petaled and their odor changes from rich purplish to brown to chocolate to dark maroon inside. The roots can be used for the ginger flavor by using them fresh or by drying. The plants grow best in shade but we've seen them creeping slowly outward into sunlight. [3]

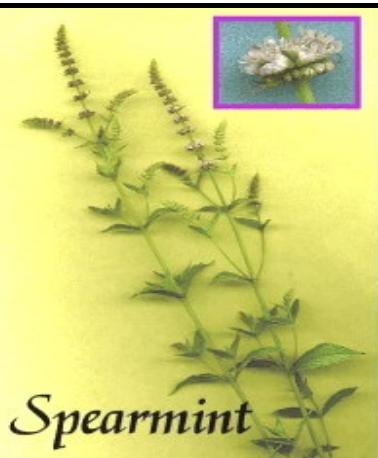


Christmas Wintergreen

Gaultheria procumbens

Wintergreen is a low-growing ground cover that spreads with medium growth once established. White bell-shaped flowers appear in the summer and bright red edible fruits will ripen late fall, lasting until June of the following year. The fruit produces the original wintergreen flavoring. The plant makes a very attractive evergreen ground cover all year long. Plant in full sun or shade.

Zone 3



Spearmint

Mentha spicata

Mentha spicata

Classified as the crown jewel of the mint world. British breeds of green mint are known as spearmint. Very popular for flavoring cold soups, beverages and meats. Likes moist soil but grows almost anywhere. Fertilize annually in late summer. When harvesting, the best leaves to use are the top bud and first two leaves; pinch out the growing tip rather than cut a whole stem. [2]



Woolly Apple Mint

Mentha suaveolens

Perennial with vigorous growth habit, reaches 1-2 feet in height. Also called "Round Leaf Mint." Has woolly foliage and a fruity aroma. Makes a nice tea though the fuzzy leaves are somewhat more powdery than other mint varieties when dried. [2]

